



OPEN

An Indo-Pacific coral spawning database

DATA DESCRIPTOR

Andrew H. Baird *et al.*[#]

The discovery of multi-species synchronous spawning of scleractinian corals on the Great Barrier Reef in the 1980s stimulated an extraordinary effort to document spawning times in other parts of the globe. Unfortunately, most of these data remain unpublished which limits our understanding of regional and global reproductive patterns. The Coral Spawning Database (CSD) collates much of these disparate data into a single place. The CSD includes 6178 observations (3085 of which were unpublished) of the time or day of spawning for over 300 scleractinian species in 61 genera from 101 sites in the Indo-Pacific. The goal of the CSD is to provide open access to coral spawning data to accelerate our understanding of coral reproductive biology and to provide a baseline against which to evaluate any future changes in reproductive phenology.

Background & Summary

Scleractinian corals are the ecosystem engineers of coral reefs, the most species-rich marine ecosystems. Scleractinian corals have a bipartite life history, with a sessile adult stage and a planktonic larval stage that allows dispersal among reefs. Corals produce larvae in one of two ways: gametes are broadcast-spawned for external fertilization or the eggs are retained for internal fertilization, followed by the release of planula larvae from the polyp. The discovery of multi-species synchronous spawning on the Great Barrier Reef¹ stimulated a large effort to document coral spawning times in other regions of the world. Similar multi-species spawning events *sensu*² have now been documented in over 25 locations throughout the Indo-Pacific^{3–5}. However, much additional data on coral sexual reproductive patterns remain unpublished. Even when spawning data are published, there is often insufficient detail, such as the precise time and duration of spawning, to address many important questions. Consequently, predicting the month of spawning has been the focus of many studies to date⁶.

Coral spawning times can be used to address many significant and fundamental questions in coral reef ecology. Most coral species are notoriously difficult to identify and spawning times have been used to infer pre-zygotic barriers to fertilization and thus assist decisions about species boundaries^{7,8}. While proximate cues associated with the month of spawning are reasonably well understood in some taxa^{6,9}, the relationship between cues for the date and time of spawning are poorly understood. Similarly, potential phylogenetic patterns and geographical variation in spawning times are only beginning to be explored¹⁰. Knowing when corals spawn is also important for managing coastal development. For example, in Western Australia, legislation requires dredging operations to cease during mass spawning events^{11,12}. Coral spawning is also an economic boon for tourist operators in many parts of the world, such as the Great Barrier Reef. Furthermore, population level records of spawning times provide a baseline against which to evaluate potential changes in spawning synchrony or seasonality associated with anthropogenic disruptions to environmental cues, in particular, sea surface temperature¹³. Knowledge of the timing of spawning is also essential for accurately estimating levels of connectivity among populations, given season differences in current flow¹⁴. The value of long-term species level data on coral spawning has recently been demonstrated in a test of the influence of temperature and wind on the night of coral spawning¹⁵.

In this data descriptor, we present the Coral Spawning Database (CSD). The CSD includes spawning observations for reef building coral species from the Indo-Pacific. The CSD includes 6178 observations (3085 of which were unpublished) of the time or day of spawning for 300+ scleractinian species in 61 genera (Online-only Table 1) from 101 sites (Fig. 1) in the Indo-Pacific. The goals of the CSD are: (i) to assemble the scattered and mostly unpublished observations of scleractinian coral spawning times and (ii) to make these data readily available to the research community. Our vision is to help advance many aspects of coral reef science and conservation at a time of unprecedented environmental and societal change.

[#]A list of authors and their affiliations appears at the end of the paper.

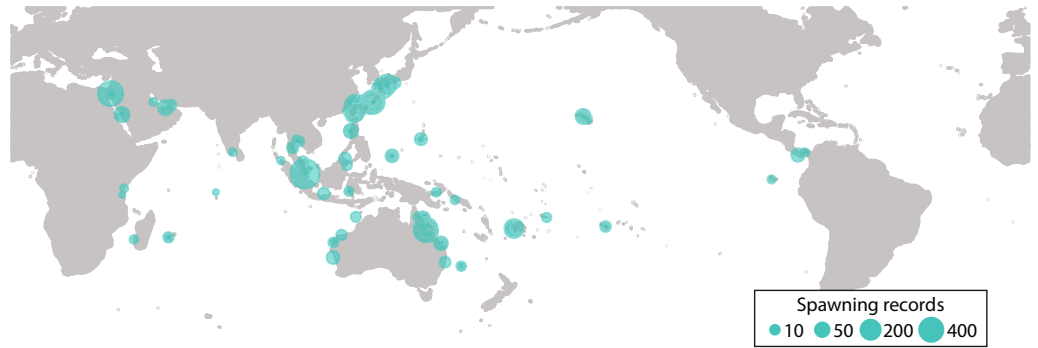


Fig. 1 The number of spawning records by site.

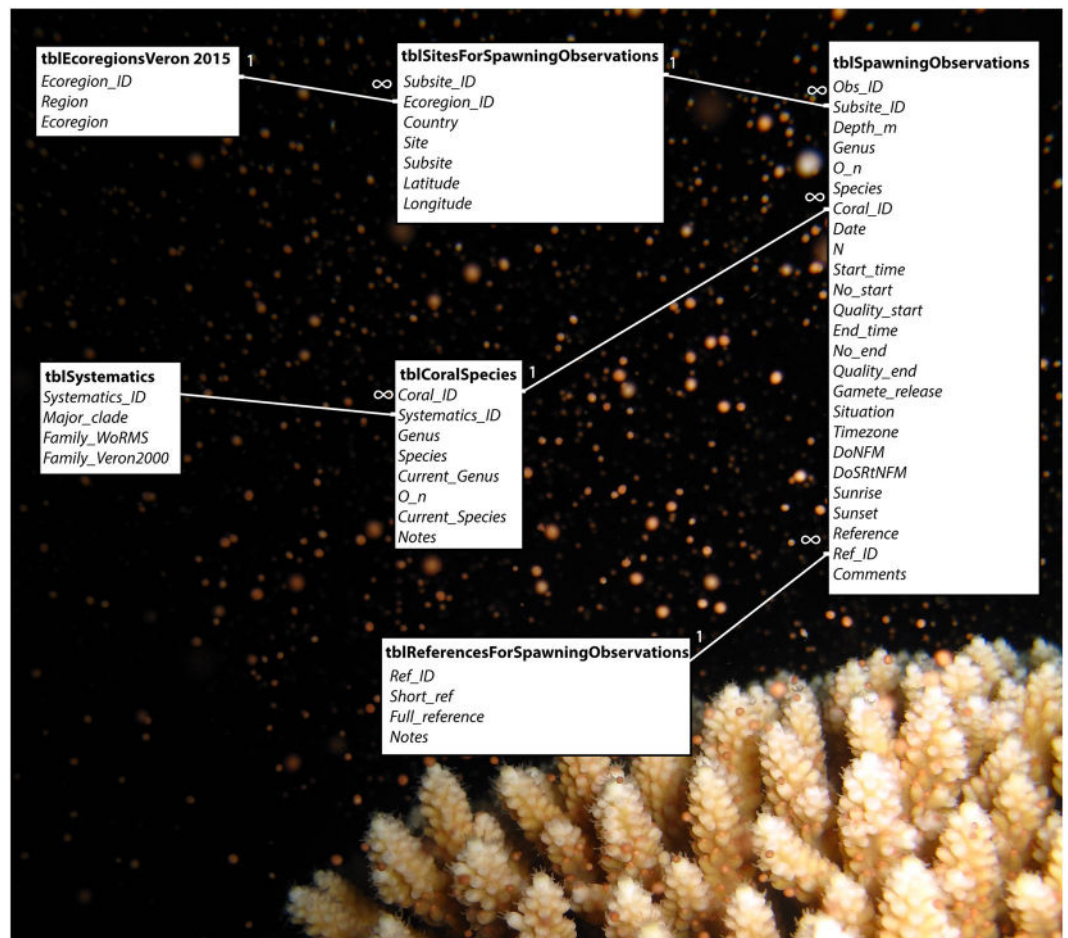


Fig. 2 Arrangement of data tables in the Access relational database.

Methods

The CSD includes spawning times for broadcast spawning scleractinian coral species in the Indo-Pacific. There are two sources for these data: the literature and unpublished observations. Published literature was selected based on the authors' knowledge of the subject area and a literature search using the terms "coral AND spawn*". Over 50 researchers known by the authors to have extensive data on coral spawning times were approached to contribute unpublished data. This initial invitation led to a subsequent round of invitations to additional contributors. Of course, we encourage any researchers with data we have missed to contribute their observations in the annual update of the database. The database focusses on spawning times. Many other biological variables related to coral reproduction, such as fecundity, are available in the Coral Traits Database¹⁶.

The database is available as a Microsoft Access relational database or an Excel spreadsheet. To minimise repetition in data entry, spawning observation information is entered in three primary tables (Fig. 2). The first ("tblSitesForSpawningObservations") is used to enter geographic information on each study site; the second

(“tblSpawningObservations”) contains details of the spawning activity recorded at each site; the third (“tblReferencesForSpawningObservations”) contains either full bibliographic details for published studies or details of the source of unpublished data. To assist with data analysis, three accessory tables are also linked. The first (“tblEcoregionsVeron2015”) allows sites to be grouped into the biogeographical Ecoregions proposed by¹⁷ or by broader region (e.g. Indian Ocean, Western and Central Pacific, Eastern Pacific). The remaining two tables allow the coral species to be grouped systematically for analysis. The first (“tblCoralSpecies”) has a list of over 1600 coral species with genus and species names (primarily from¹⁸ or subsequent descriptions of new species) mapped to currently accepted names (primarily from¹⁹) where the taxonomy has changed. The second (“tblSystematics”) allows species to be grouped into major clades or currently accepted families¹⁹ as revealed by molecular studies^{20–22}.

Data entry. Coral Spawning Database fields.

1) Site information (in tblSitesForSpawningObservations):

Ecoregion_ID link to Ecoregions (150) as defined by¹⁷
 Country the country, territory (e.g. Guam) or island group (e.g. Hawaiian Islands) where spawning observation was made
 Site accepted name for broad geographical location (e.g. archipelago, island, offshore reef, bay, etc.) of the observation
 Subsite more precise site name within location (where applicable; na entered where no subsite)
 Latitude in decimal degrees (-ve values for sites South of the Equator).
 Longitude in decimal degrees (-ve values for sites West of the Greenwich Meridian).

2) Spawning observations (in tblSpawningObservations):

Depth_m the approximate depth at which the colony was collected (for *ex situ* observations) or observed (for *in situ* observations). If not recorded then -99 entered.
 Genus currently accepted genus name¹⁹
 O_n open nomenclature qualifier: see explanation below under “Species identifications”.
 Species the species name used by the observer
 Date date of spawning observation in the format day/month/year (e.g. 24/11/1983)
 N number of colonies or individuals observed spawning. Used -99 if not known. If exact number of colonies not counted but more than a specific number were observed to spawn (e.g. > 25), then minimum number counted was entered (e.g. 25).
 Start_time time of first observation of spawning for colony(ies) of species: time (hh:mm) on a 24 hour clock e.g. 18:30. See “recording the time of spawning” below for ways to use the time fields to capture the various ways spawning is usually observed. No threshold applied to the intensity of spawning.
 No_start no information on time that spawning started: True or False.
 Quality_start if No_start is False, Exact or Approx.
 End_time time of last observation of spawning for colony(ies) of species (if later than start time, normally): time (hh:mm) on a 24 h clock e.g. 18:30
 No_end no information on time that spawning ended: True or False
 Quality_end if No_end is False, Exact or Approx
 Gamete_release (five character states as follows)

- Bundles – eggs and sperm released together packaged in bundles
- Eggs – only eggs released
- Sperm – only sperm released
- Both separately – eggs and sperm released separately from the same colony. Examples include *Lobophyllia hemprichii* and *Goniastrea favulus*
- Not recorded – release of gametes not observed or not reported

Situation *In situ* = spawning observed underwater or *Ex situ* = spawning observed in tanks of colony(ies) recently removed from the reef.

Timezone local time zone on the date of the spawning observation. This allows local time of spawning to be related to local time of sunset (or occasionally sunrise, for daytime spawners). This field is not an integer to accommodate 30 minute time differences (e.g. India and Sri Lanka are on UTC + 5.5). Enter -ve values for sites west of the Greenwich Meridian: e.g. -11 for Hawaii. (Note: Daylight Saving Times mean that time zones at some sites vary with date, e.g. Fiji goes from UTC + 12 to UTC + 13 from early November to early January).

The next four fields contain benchmarks for comparing spawning among sites for different species or groups of species²³. The first is the date of the nearest full moon (DoNFM) to the date of spawning (with 75% of spawning recorded in the week after the full moon). This allows all spawning dates to be calculated in terms of days before or after the full moon (DoSRtNFM). Sunset provides a benchmark for comparing the times of spawning for most spawners (over 90% of spawning started within 4 hours of sunset) and sunrise for a few daytime spawners such as *Pocillopora verrucosa*. Dates of full moon and times of sunrise and sunset are available for given locations from the web (e.g. www.timeanddate.com) and can be entered manually. However, they can also be calculated automatically in the database based on the date, time zone and, for sunrise and sunset, the latitude and longitude. Excel spreadsheets are also available on request from the corresponding authors to calculate dates of full moon and times of sunrise and sunset in addition to a data entry template.

DoNFM	Date of Nearest Full Moon. Calculated automatically and corrected for longitude based on the local time zone.
DoSRtNFM	Date of Spawning Relative to Nearest Full Moon. Calculated automatically using time zone and date of observation in days before (-ve) or after (+ve) the nearest full moon (ranges from -15 days to +14 days).
Sunset	local time of sunset using a 24 h clock e.g. 18:30. Sunset and sunrise times were calculated for each observation based on latitude, longitude and time zone of the site and the date, using the method in the NOAA solar calculations day spreadsheet at https://www.esrl.noaa.gov/gmd/grad/solcalc/calcdetails.html . An Excel spreadsheet (Sunrise_Sunset_DoNFM_Calculations.xlsx) is provided for anyone wishing to use the Excel version of the dataset.
Sunrise	local time of sunrise using a 24 h clock e.g. 05:30. See above.
Ref_ID	a link to reference information for the data if available. If not the names of the observers are listed (e.g. Baird, Connolly, Dornelas and Madin unpublished)
Comments	any additional details provided

3) Reference information (in tblReferencesForSpawningObservations):

Each set of observations is referenced to its published or unpublished source in this table via a Ref_ID. The table contains two main fields: “Short_ref” (e.g. Baird *et al.* 2015) and “Full_reference” (e.g. Baird AH, Cumbo VR, Gudge S, Keith SA, Maynard JA, Tan C-H, Woolsey ES (2015) Coral reproduction on the world’s southernmost reef at Lord Howe Island, Australia. *Aquatic Biology* 23:275–284). These can be filled in before or after entering spawning observations. An email address is provided for all unpublished contributions.

Notes to recording the time of spawning. For the quality of a start or end time to be ‘Exact’, a colony must be under continuous observation and the time of onset or end of spawning be observed and recorded. Most *in situ* observations would be expected to be approximate (‘Approx’).

The Quality_start, Quality_end, No_start and No_end fields are designed to accommodate the most common ways spawning is observed. A series of examples are given below.

1. A colony is observed spawning but it is not known exactly when it started. No end time is recorded. Here enter the time the colony was first observed spawning as the Start_time and the Quality_start as ‘Approx’. Leave the End_time blank and set No_end to True.
2. A colony is followed closely until spawning is observed to begin but the precise time when spawning ends is not recorded. However, the colony is observed to be still dribbling spawn 30 minutes after spawning started. Here enter the Quality_start as ‘Exact’ with the End_time set to 30 minutes after the Start_time and the Quality_end set to ‘Approx’.
3. A colony is followed closely from the beginning until the end of spawning. Here enter the times and note Quality_start and Quality_end as ‘Exact’.
4. A colony is placed in a bucket and checked every 30 minutes. At the first observation there is no evidence of spawning, 30 min later the surface of the water is covered in bundles and the colony is no longer spawning. Here enter the time of the first observation as the start time and the time of the second observation as the end time and set Quality_start and Quality_end to ‘Approx’.
5. Only the night of spawning is known, for example, gametes are no longer apparent in a tagged and sequentially sampled colony. Here don’t enter either a start time or an end time and leave Quality_start and Quality_end blank. Set No_start and No_end to True.

Species identifications. Species were generally identified following^{18,24} or by comparing skeletons to the type material or the original descriptions of nominal species. Specimens identified following^{18,24} were updated to the currently accepted names at the World Register of Marine Species¹⁹. The database also allows for uncertainties in species identifications to be indicated with the use of a series of open nomenclature qualifiers^{25,26} that allow the assignment of specimens to a nominal species with varying degrees of certainty. Specimens that closely resemble the type of a nominal species are given the qualifier cf. (e.g. *Acropora* cf. *nasuta*). Specimens that have morphological affinities to a nominal species but appear distinct are given the qualifier aff. (e.g. *Acropora* aff. *pulchra*): these specimens are either geographical variants of species with high morphological plasticity or potentially undescribed species. Species that could not be matched with the type material of any nominal species were labelled as sp. in addition to the location where they were collected (e.g. *Acropora* sp_1_Fiji). These specimens are most probably undescribed species. For 1% of records spawning colonies were only identified to genus (e.g. *Montipora* sp.). Contact the sources of these data for further information on the species identity.

Data Records

A snapshot of the data contained in this descriptor can be downloaded from figshare²⁷. The data includes 6178 observations, 3085 of which were unpublished with the remainder gleaned from the literature^{28–128}. These data have been through a rigorous quality control and editorial process. Annual updates of the dataset will be uploaded to figshare as new version and also made available at any time on request from the Editor (JRG). Contributions to the CSD are welcome at any time and should be sent to the Editor (JRG).

Technical Validation

The database is governed on a voluntary basis, by an Editor (JRG), Assistant Editors (JB & AGB), a Taxonomy Advisor (AHB) and a Database Administrator (AJE). Quality control of data and editorial procedures include:

1. **Contributor approval.** Database users must request permission to become a database contributor.
2. **Editorial approval.** Once a contributor sends data to the Editor, the data will be checked and if correctly formatted will be forward to the Database Administrator
3. **User feedback.** Data issues can be reported for any observation by email to the Editor

Received: 18 June 2020; Accepted: 19 November 2020;

Published online: 29 January 2021

References

1. Harrison, P. L. *et al.* Mass spawning in tropical reef corals. *Science* **223**, 1186–1189 (1984).
2. Willis, B. L., Babcock, R. C., Harrison, P. L. & Oliver, J. K. Patterns in the mass spawning of corals on the Great Barrier Reef from 1981 to 1984. *Proc 5th Int Coral Reef Symp* **4**, 343–348 (1985).
3. Baird, A. H., Guest, J. R. & Willis, B. L. Systematic and biogeographical patterns in the reproductive biology of scleractinian corals. *Annu. Rev. Ecol., Evol. Syst.* **40**, 551–571 (2009).
4. Baird, A. H. *et al.* Coral reproduction on the world's southernmost reef at Lord Howe Island, Australia. *Aquat. Biol.* **23**, 275–284 (2015).
5. Harrison, P. L. in *Coral Reefs: An Ecosystem in Transition* (eds Z. Dubinsky & N. Stambler) 59–85 (Springer Science, 2011).
6. Keith, S. A. *et al.* Coral mass spawning predicted by rapid seasonal rise in ocean temperature. *Proc. R. Soc. Lond., Ser. B: Biol. Sci.* **283**, 20160011 (2016).
7. Wolstenholme, J. K. Temporal reproductive isolation and gametic compatibility are evolutionary mechanisms in the *Acropora humilis* species group (Cnidaria; Scleractinia). *Mar. Biol.* **144**, 567–582 (2004).
8. Morita, M. *et al.* Reproductive strategies in the intercrossing corals *Acropora donei* and *A. tenuis* to prevent hybridization. *Coral Reefs* **38**, 1211–1223 (2019).
9. Randall, C. J. *et al.* Sexual production of corals for reef restoration in the Anthropocene. *Mar. Ecol. Prog. Ser.* **635**, 203–232 (2020).
10. Bouwmeester, J. *et al.* Multi-species spawning synchrony within scleractinian coral assemblages in the Red Sea. *Coral Reefs* **34**, 65–77 (2015).
11. Baird, A. H., Blakeway, D. R., Hurley, T. J. & Stoddart, J. A. Seasonality of coral reproduction in the Dampier Archipelago, northern Western Australia. *Mar. Biol.* **158**, 275–285 (2011).
12. Styan, C. A. & Rosser, N. L. Is monitoring for mass spawning events in coral assemblages in north Western Australia likely to detect spawning? *Mar. Pollut. Bull.* **64**, 2523–2527 (2012).
13. Visser, M. E. & Both, C. Shifts in phenology due to global climate change: the need for a yardstick. *Proc. R. Soc. Lond., Ser. B: Biol. Sci.* **272**, 2561–2569 (2005).
14. Hock, K., Doropoulos, C., Gorton, R., Condie, S. A. & Mumby, P. J. Split spawning increases robustness of coral larval supply and inter-reef connectivity. *Nat. Comm.* **10** (2019).
15. Sakai, Y. *et al.* Environmental factors explain spawning day deviation from full moon in the scleractinian coral *Acropora*. *Biol. Lett.* **16**, 20190760 (2020).
16. Madin, J. S. *et al.* The Coral Trait Database, a curated database of trait information for coral species from the global oceans. *Scientific Data* **3**, 160017 (2016).
17. Veron, J., Stafford-Smith, M., DeVantier, L. & Turak, E. Overview of distribution patterns of zooxanthellate Scleractinia. *Front. Mar. Sci.* **1** (2015).
18. Veron, J. E. N. *Corals of the world*. (AIMS, 2000).
19. Hoeksema, B. W. & Cairns, S. D. World List of Scleractinia. Accessed through: World Register of Marine Species at: <http://www.marinespecies.org/aphia.php?p=taxdetails&id=1363> (2020).
20. Fukami, H. *et al.* Mitochondrial and nuclear genes suggest that stony corals are monophyletic but most families of stony corals are not (order Scleractinia, class Anthozoa, phylum Cnidaria). *PLoS ONE* **3** (2008).
21. Arrigoni, R., Terraneo, T. I., Galli, P. & Benzoni, F. Lobophylliidae (Cnidaria, Scleractinia) reshuffled: Pervasive non-monophyly at genus level. *Mol. Phylog. Evol.* **73**, 60–64 (2014).
22. Huang, D. *et al.* Towards a phylogenetic classification of reef corals: the Indo-Pacific genera *Merulina*, *Goniastrea* and *Scapophyllia* (Scleractinia, Merulinidae). *Zool. Scr.* **43**, 531–548 (2014).
23. Babcock, R. C. *et al.* Synchronous spawnings of 105 scleractinian coral species on the Great Barrier Reef. *Mar. Biol.* **90**, 379–394 (1986).
24. Veron, J. E. N. *Corals of Australia and the Indo-Pacific*. (Angus & Robertson, 1986).
25. Bengtson, P. Open Nomenclature. *Palaeontology* **31**, 223–227 (1988).
26. Sigovini, M., Keppel, E. & Tagliapietra, D. Open Nomenclature in the biodiversity era. *Methods Ecol. Evol.* **7**, 1217–1225 (2016).
27. Baird, A. H. *et al.* Coral Spawning Database. *Newcastle University*, <https://doi.org/10.25405/data.ncl.13082333> (2020).
28. Babcock, R., Mundy, C., Keesing, J. & Oliver, J. Predictable and unpredictable spawning events: *in situ* behavioural data from free-spawning coral reef invertebrates. *Invertebr. Reprod. Dev.* **22**, 213–227 (1992).
29. Babcock, R. C. Reproduction and distribution of two species of *Goniastrea* (Scleractinia) from the Great Barrier Reef Province. *Coral Reefs* **2**, 187–195 (1984).
30. Babcock, R. C., Willis, B. L. & Simpson, C. J. Mass spawning of corals on a high-latitude coral-reef. *Coral Reefs* **13**, 161–169 (1994).
31. Boch, C. A., Ananthasubramaniam, B., Sweeney, A. M., Francis, J. D. III & Morse, D. E. Effects of Light Dynamics on Coral Spawning Synchrony. *Biol. Bull.* **220**, 161–173 (2011).
32. Boch, C. A. & Morse, A. N. C. Testing the effectiveness of direct propagation techniques for coral restoration of *Acropora* spp. *Ecol. Eng.* **40**, 11–17 (2012).
33. Bouwmeester, J., Gatins, R., Giles, E. C., Sinclair-Taylor, T. H. & Berumen, M. L. Spawning of coral reef invertebrates and a second spawning season for scleractinian corals in the central Red Sea. *Invertebr. Biol.* **135**, 273–284 (2016).
34. Bronstein, O. & Loya, Y. Daytime spawning of *Porites rus* on the coral reefs of Chumbe Island in Zanzibar, Western Indian Ocean (WIO). *Coral Reefs* **30**, 441–441 (2011).
35. Carroll, A., Harrison, P. L. & Adjeroud, M. Sexual reproduction of *Acropora* reef corals at Moorea, French Polynesia. *Coral Reefs* **25**, 93–97 (2006).
36. Chelliah, A. *et al.* First record of multi-species synchronous coral spawning from Malaysia. *PeerJ* **3**, e777 (2015).
37. Chua, C. M., Leggat, W., Moya, A. & Baird, A. H. Temperature affects the early life history stages of corals more than near future ocean acidification. *Mar. Ecol. Prog. Ser.* **475**, 85–92 (2013).
38. Chua, C. M., Leggat, W., Moya, A. & Baird, A. H. Near-future reductions in pH will have no consistent ecological effects on the early life-history stages of reef corals. *Mar. Ecol. Prog. Ser.* **486**, 143–151 (2013).

39. Dai, C. F., Soong, K. & Fan, T. Y. Sexual reproduction of corals in northern and southern Taiwan. *Proceeding of the 7th International Coral Reef Symposium 1*, 448–455 (1992).
40. Doropoulos, C. & Diaz-Pulido, G. High CO₂ reduces the settlement of a spawning coral on three common species of crustose coralline algae. *Mar. Ecol. Prog. Ser.* **475**, 93–99 (2013).
41. Doropoulos, C. *et al.* Testing industrial-scale coral restoration techniques: Harvesting and culturing wild coral-spawn slicks. *Front. Mar. Sci.* **6** (2019).
42. Doropoulos, C., Ward, S., Diaz-Pulido, G., Hoegh-Guldberg, O. & Mumby, P. J. Ocean acidification reduces coral recruitment by disrupting intimate larval-algal settlement interactions. *Ecol. Lett.*, no-no, (2012).
43. Doropoulos, C., Ward, S., Marshall, A., Diaz-Pulido, G. & Mumby, P. J. Interactions among chronic and acute impacts on coral recruits: the importance of size-escape thresholds. *Ecology* **93**, 2131–2138 (2012).
44. Eyal-Shaham, L. *et al.* Repetitive sex change in the stony coral *Herpolitha limax* across a wide geographic range. *Scientific Reports* **9**, 2936 (2019).
45. Eyre, B. D., Glud, R. N. & Patten, N. Mass coral spawning: A natural large-scale nutrient addition experiment. *Limnol. Oceanogr.* **53**, 997–1013 (2008).
46. Fadlallah, Y. H. Synchronous spawning of *Acropora clathrata* coral colonies from the western Arabian Gulf (Saudi Arabia). *Bull. Mar. Sci.* **59**, 209–216 (1996).
47. Field, S. in *Reproduction in Reef Corals* (eds E. F. Cox, D. A. Krupp, & P. L. Jokiel) 111–119 (Hawaii Institute of Marine Biology, 1998).
48. Fiebig, S. M. & Vuki, V. C. Mass spawning of scleractinian corals on Fijian reefs and in particular, Suva Reef. *The South Pacific Journal of Natural Sciences* **15** (1997).
49. Fiene-Severns, P. in *Reproduction in Reef Corals* (eds E. F. Cox, D. A. Krupp, & P. L. Jokiel) 22–24 (Hawaii Institute of Marine Biology, 1998).
50. Fujiwara, S., Kezuka, D., Ishimizu, H., Tabata, S. & Nojima, S. Condition for mass spawning of scleractinian coral *Acropora* in the Sekisei Lagoon, Ryukyu Islands. *Bull. Jap. Soc. Fish. Oceanogr.* **79**, 130–140 (2015).
51. Fukami, H., Omori, M., Shimoike, K., Hayashibara, T. & Hatta, M. Ecological and genetic aspects of reproductive isolation by different spawning times in *Acropora* corals. *Mar. Biol.* **142**, 679–684 (2003).
52. Gilmour, J. Experimental investigation into the effects of suspended sediment on fertilisation, larval survival and settlement in a scleractinian coral. *Mar. Biol.* **135**, 451–462 (1999).
53. Gilmour, J. P., Smith, L. D. & Brinkman, R. M. Biannual spawning, rapid larval development and evidence of self-seeding for scleractinian corals at an isolated system of reefs. *Mar. Biol.* **156**, 1297–1309 (2009).
54. Glynn, P. W. *et al.* Reef coral reproduction in the eastern Pacific: Costa Rica, Panama, and Galapagos Islands (Ecuador). 3. Agariciidae (*Pavona gigantea* and *Gardineroseris planulata*). *Mar. Biol.* **125**, 579–601 (1996).
55. Glynn, P. W. *et al.* Reef coral reproduction in the eastern Pacific: Costa Rica, Panamá, and the Galápagos Islands (Ecuador). VI. Agariciidae, *Pavona clavus*. *Mar. Biol.* **158**, 1601–1617 (2011).
56. Glynn, P. W. *et al.* Reproductive ecology of the azooxanthellate coral *Tubastraea coccinea* in the equatorial eastern pacific: Part V. Dendrophylliidae. *Mar. Biol.* **153**, 529–544 (2008).
57. Glynn, P. W., Colley, S. B., Ting, J. H., Mate, J. L. & Guzman, H. M. Reef coral reproduction in the eastern Pacific: Costa Rica, Panama, and Galapagos Islands (Ecuador). 4. Agariciidae, recruitment and recovery of *Pavona varians* and *Pavona sp. A*. *Mar. Biol.* **136**, 785–805 (2000).
58. Gomez, E. J. *et al.* Gametogenesis and reproductive pattern of the reef-building coral *Acropora millepora* in northwestern Philippines. *Invertebr. Reprod. Dev.* **62**, 202–208 (2018).
59. Graham, E. M., Baird, A. H. & Connolly, S. R. Survival dynamics of scleractinian coral larvae and implications for dispersal. *Coral Reefs* **27**, 529–539 (2008).
60. Gress, E. & Paige, N. & Bollard, S. Observations of *Acropora* spawning in the Mozambique Channel. *West. Indian Ocean J. Mar. Sci.* **13**, 107 (2014).
61. Guest, J. R., Baird, A. H., Goh, B. P. L. & Chou, L. M. Reproductive seasonality in an equatorial assemblage of scleractinian corals. *Coral Reefs* **24**, 112–116 (2005).
62. Hayashibara, T. & Shimoike, K. Cryptic species of *Acropora digitifera*. *Coral Reefs* **21**, 224–225 (2002).
63. Hayashibara, T. *et al.* Patterns of coral spawning at Akajima Island, Okinawa, Japan. *Mar. Ecol. Prog. Ser.* **101**, 253–262 (1993).
64. Heyward, A., Yamazato, K., Yeemin, T. & Minei, M. Sexual reproduction of coral in Okinawa. *Galaxea* **6**, 331–343 (1987).
65. Heyward, A. J. in *Coral Reef Population Biology* (eds P. L. Jokiel, R. H. Richmond, & R. A. Rogers) 170–178 (Sea Grant Coop, 1986).
66. Heyward, A. J. & Babcock, R. C. Self- and cross-fertilization in scleractinian corals. *Mar. Biol.* **90**, 191–195 (1986).
67. Heyward, A. J. & Negri, A. P. Natural inducers for coral larval metamorphosis. *Coral Reefs* **18**, 273–279 (1999).
68. Hirose, M. & Hidaka, M. Early development of zooxanthella-containing eggs of the corals *Porites cylindrica* and *Montipora digitata*: The endodermal localization of zooxanthellae. *Zool. Sci.* **23**, 873–881 (2006).
69. Hirose, M., Kinzie, R. A. & Hidaka, M. Timing and process of entry of zooxanthellae into oocytes of hermatypic corals. *Coral Reefs* **20**, 273–280 (2001).
70. Hodgson, G. Potential gamete wastage in synchronously spawning corals due to hybrid inviability. *Proceedings of the 6th International Coral Reef Symposium 2*, 707–714 (1988).
71. Howells, E. J., Abrego, D., Vaughan, G. O. & Burt, J. A. Coral spawning in the Gulf of Oman and relationship to latitudinal variation in spawning season in the northwest Indian Ocean. *Scientific Reports* **4**, 7484 (2014).
72. Howells, E. J., Berkelmans, R., van Oppen, M. J. H., Willis, B. L. & Bay, L. K. Historical thermal regimes define limits to coral acclimatization. *Ecology* **94**, 1078–1088 (2013).
73. Hunter, C. L. Environmental cues controlling spawning in two Hawaiian corals, *Montipora verrucosa* and *M. dilitata*. *Proceedings of the 6th International Coral Reef Symposium 2*, 727–732 (1988).
74. Itano, D. & Buckley, T. Observations of the mass spawning of corals and palolo (*Eunice viridis*) in American Samoa. (Department of Marine and Wildlife Resources, American Samoa, American Samoa, 1988).
75. Jamodiong, E. A. *et al.* Coral spawning and spawn-slick observation in the Philippines. *Mar. Biodivers.* **48**, 2187–2192 (2018).
76. Kenyon, J. C. Hybridization and polyploidy in the coral genus *Acropora*. *Pac. Sci.* **48**, 203–204 (1994).
77. Kenyon, J. C. Latitudinal differences between Palau and Yap in coral reproductive synchrony. *Pac. Sci.* **49**, 156–164 (1995).
78. Kinzie, R. A. Spawning in the reef corals *Pocillopora verrucosa* and *P. eydouxi* at Sesoko Island, Okinawa. *Galaxea* **11**, 93–105 (1993).
79. Kojis, B. L. & Quinn, N. J. Aspects of sexual reproduction and larval development in the shallow water hermatypic coral, *Goniastrea australensis* (Edwards and Haime, 1857). *Bull. Mar. Sci.* **31**, 558–573 (1981).
80. Kojis, B. L. & Quinn, N. J. Reproductive ecology of two faviid corals (Coelenterata: Scleractinia). *Mar. Ecol. Prog. Ser.* **8**, 251–255 (1982).
81. Kojis, B. L. & Quinn, N. J. Reproductive strategies in four species of *Porites* (Scleractinia). *Proceedings of the 4th International Coral Reef Symposium 2*, 145–151 (1982).
82. Kongjandtre, N., Ridgway, T., Ward, S. & Hoegh-Guldberg, O. Broadcast spawning patterns of *Favia* species on the inshore reefs of Thailand. *Coral Reefs* **29**, 227–234 (2010).

83. Krupp, D. A. Sexual reproduction and early development of the solitary coral *Fungia scutaria* (Anthozoa: Scleractinia). *Coral Reefs* **2**, 159–164 (1983).
84. Ligson, C. A., Tabalanza, T. D., Villanueva, R. D. & Cabaitan, P. C. Feasibility of early outplanting of sexually propagated *Acropora verweyi* for coral reef restoration demonstrated in the Philippines. *Restor. Ecol.* **28**, 244–251 (2020).
85. Lin, C. H. & Nozawa, Y. Variability of spawning time (lunar day) in *Acropora* versus merulinid corals: a 7-yr record of *in situ* coral spawning in Taiwan. *Coral Reefs* **36**, 1269–1278 (2017).
86. Loya, Y., Heyward, A. & Sakai, K. Reproductive patterns of fungiid corals in Okinawa, Japan. *Galaxea* **11**, 119–129 (2009).
87. Loya, Y. & Sakai, K. Bidirectional sex change in mushroom stony corals. *Proceedings of the Royal Society B: Biological Sciences* **275**, 2335–2343 (2008).
88. Maboloc, E. A., Jamodiong, E. A. & Villanueva, R. D. Reproductive biology and larval development of the scleractinian corals *Favites colemani* and *F. abdita* (Faviidae) in northwestern Philippines. *Invertebr. Reprod. Dev.* **60**, 1–11 (2016).
89. Mangubhai, S. Reproductive ecology of the scleractinian corals *Echinopora gemmacea* and *Leptoria phrygia* (Faviidae) on equatorial reefs in Kenya. *Invertebr. Reprod. Dev.* **53**, 67–79 (2009).
90. Mangubhai, S., Harris, A. & Graham, N. A. J. Synchronous daytime spawning of the solitary coral *Fungia danai* (Fungiidae) in the Chagos Archipelago, central Indian Ocean. *Coral Reefs* **26**, 15–15 (2007).
91. Markey, K. L., Baird, A. H., Humphrey, C. & Negri, A. Insecticides and a fungicide affect multiple coral life stages. *Mar. Ecol. Prog. Ser.* **330**, 127–137 (2007).
92. Mate, J. F. in *Reproduction in Reef Corals* (eds E. F. Cox, D. A. Krupp, & P. L. Jokiel) 25–37 (Hawaii Institute of Marine Biology, 1998).
93. Mate, J. F., Wilson, J., Field, S. & Neves, E. G. in *Reproduction in Reef Corals* (eds E. F. Cox, D. A. Krupp, & P. L. Jokiel) 25–37 (Hawaii Institute of Marine Biology, 1998).
94. Mezaki, T. *et al.* Spawning patterns of high latitude scleractinian corals from 2002 to 2006 at Nishidomari, Otsuki, Kochi, Japan. *Kuroshio Biosphere* **3**, 33–47 (2007).
95. Mohamed, A. R. *et al.* The transcriptomic response of the coral *Acropora digitifera* to a competent *Symbiodinium* strain: the symbiosome as an arrested early phagosome. *Mol. Ecol.* **25**, 3127–3141 (2016).
96. Mundy, C. N. & Green, A. *Spawning observations of corals and other invertebrates in American Samoa*. (Department of Marine and Wildlife Resources, American Samoa Government, Samoa, 1999).
97. Nitschke, M. R., Davy, S. K. & Ward, S. Horizontal transmission of *Symbiodinium* cells between adult and juvenile corals is aided by benthic sediment. *Coral Reefs* **35**, 335–344 (2016).
98. Nozawa, Y. & Harrison, P. L. Temporal settlement patterns of larvae of the broadcast spawning reef coral *Favites chinensis* and the broadcast spawning and brooding reef coral *Goniastrea aspera* from Okinawa, Japan. *Coral Reefs* **24**, 274–282 (2005).
99. Nozawa, Y., Tokeshi, M. & Nojima, S. Reproduction and recruitment of scleractinian corals in a high-latitude coral community, Amakusa, southwestern Japan. *Mar. Biol.* **149**, 1047–1058 (2006).
100. Okamoto, M., Nojima, S., Furushima, Y. & Phoe, W. C. A basic experiment of coral culture using sexual reproduction in the open sea. *Fish. Sci.* **71**, 263–270 (2005).
101. Omori, M., Fukami, H., Kobinata, H. & Hatta, M. Significant drop of fertilization of *Acropora* corals in 1999. An after-effect of heavy coral bleaching? *Limnol. Oceanogr.* **46**, 704–706 (2001).
102. Penland, L., Kloulechad, J., Idip, D. & van Woesik, R. Coral spawning in the western Pacific Ocean is related to solar insolation: evidence of multiple spawning events in Palau. *Coral Reefs* **23**, 133–140 (2004).
103. Plathong, S. *et al.* Daytime gamete release from the reef-building coral, *Pavona sp.*, in the Gulf of Thailand. *Coral Reefs* **25**, 72–72 (2006).
104. Rapuano, H. *et al.* Reproductive strategies of the coral *Turbinaria reniformis* in the northern Gulf of Aqaba (Red Sea). *Scientific Reports* **7**, 42670 (2017).
105. Raj, K. D. & Edward, J. K. P. Observations on the reproduction of *Acropora* corals along the Tuticorin coast of the Gulf of Mannar, Southeastern India. *Indian. J. Mar. Sci.* **39**, 219–226 (2010).
106. Richmond, R. H. Competency and dispersal potential of planula larvae of a spawning versus a brooding coral. *Proceedings of the 6th International Coral Reef Symposium* **2**, 827–831 (1988).
107. Sakai, K. Gametogenesis, spawning, and planula brooding by the reef coral *Goniastrea aspera* (Scleractinia) in Okinawa, Japan. *Mar. Ecol. Prog. Ser.* **151**, 67–72 (1997).
108. Schmidt-Roach, S., Miller, K. J., Woolsey, E., Gerlach, G. & Baird, A. H. Broadcast spawning by *Pocillopora* species on the Great Barrier Reef. *PLoS ONE* **7**, e50847 (2012).
109. Shlesinger, T., Grinblat, M., Rapuano, H., Amit, T. & Loya, Y. Can mesophotic reefs replenish shallow reefs? Reduced coral reproductive performance casts a doubt. *Ecology* **99**, 421–437 (2018).
110. Shlesinger, T. & Loya, Y. Breakdown in spawning synchrony: A silent threat to coral persistence. *Science* **365**, 1002–1007 (2019).
111. Shlesinger, Y. & Loya, Y. Coral community reproductive patterns: Red Sea versus the Great Barrier Reef. *Science* **228**, 1333–1335 (1985).
112. Siboni, N. *et al.* Using bacterial extract along with differential gene expression in *Acropora millepora* larvae to decouple the processes of attachment and metamorphosis. *PLoS ONE* **7**, e37774–e37774 (2012).
113. Simpson, C. J. Mass spawning of scleractinian corals in the Dampier Archipelago and the implications for management of coral reefs in Western Australia. Report No. 244, (Dept. Conservation and Environment Western Australia Bulletin, Perth, 1985).
114. Stanton, F. G. Spatio-temporal patterns of spawning in the coral, *Montipora verrucosa* in Hawaii. *Proceeding of the 7th International Coral Reef Symposium* **1**, 489–493 (1992).
115. Tan, C. H. *et al.* Multispecific synchronous coral spawning on Pulau Bidong, Malaysia, South China Sea. *Bull. Mar. Sci.* **96**, 193–194 (2020).
116. Tomascik, T., Mah, A. J., Nontij, A. & Moosa, M. K. *The Ecology of the Indonesian Seas*. Vol. One (Periplus, 1997).
117. Twan, W. H., Hwang, J. S. & Chang, C. F. Sex steroids in scleractinian coral, *Euphyllia ancora*: Implication in mass spawning. *Biol. Reprod.* **68**, 2255–2260 (2003).
118. Van Oppen, M. J. H., Willis, B. L., Van Rheede, T. & Miller, D. J. Spawning times, reproductive compatibilities and genetic structuring in the *Acropora aspera* group: evidence for natural hybridization and semi-permeable species boundaries in corals. *Mol. Ecol.* **11**, 1363–1376 (2002).
119. van Woesik, R. Coral communities at high latitude are not pseudopopulations: evidence of spawning at 32°N, Japan. *Coral Reefs* **14**, 119–120 (1995).
120. Wallace, C. C. Reproduction, recruitment and fragmentation in nine sympatric species of the coral genus *Acropora*. *Mar. Biol.* **88**, 217–233 (1985).
121. Wei, N. W. V. *et al.* Reproductive Isolation among *Acropora* species (Scleractinia: Acroporidae) in a marginal coral assemblage. *Zool. Stud.* **51**, 85–92 (2012).
122. Wild, C., Tollrian, R. & Huettel, M. Rapid recycling of coral mass-spawning products in permeable reef sediments. *Mar. Ecol. Prog. Ser.* **271**, 159–166 (2004).
123. Wilson, J. R. & Harrison, P. L. Sexual reproduction in high latitude coral communities at the Solitary Islands, eastern Australia. *Proceedings of the 8th International Coral Reef Symposium*, 533–540 (1997).
124. Wilson, J. R. & Harrison, P. L. Spawning patterns of scleractinian corals at the Solitary Islands - a high latitude coral community in eastern Australia. *Mar. Ecol. Prog. Ser.* **260**, 115–123 (2003).

125. Wolstenholme, J., Nozawa, Y., Byrne, M. & Burke, W. Timing of mass spawning in corals: potential influence of the coincidence of lunar factors and associated changes in atmospheric pressure from northern and southern hemisphere case studies. *Invertebr. Reprod. Dev.* **62**, 98–108 (2018).
126. Woolsey, E. S., Byrne, M. & Baird, A. H. The effects of temperature on embryonic development and larval survival in two scleractinian corals. *Mar. Ecol. Prog. Ser.* **493**, 179–184 (2013).
127. Woolsey, E. S., Keith, S. A., Byrne, M., Schmidt-Roach, S. & Baird, A. H. Latitudinal variation in thermal tolerance thresholds of early life stages of corals. *Coral Reefs* **34**, 471–478 (2015).
128. Yeemin, T. *Ecological studies of scleractinian coral communities above the northern limit of coral reef development in the western Pacific* PhD thesis, Kyushu University, (1991).

Acknowledgements

The authors would like to thank the ARC Centre of Excellence for Coral Reef Studies for funding the Coral Spawning Workshop in Singapore in 2017 where the database was initially developed.

Author contributions

A.H.B. and J.R.G. conceived the idea. A.H.B., J.R.G., A.J.E., J.B., A.G.B., S.-H.N. & H.M. compiled the data and jointly wrote the data descriptor. A.J.E. designed the database. All other authors contributed unpublished data and commented on the text.

Competing interests

The authors declare no competing financial interest.

Additional information

Correspondence and requests for materials should be addressed to A.H.B., J.R.G. or A.J.E.

Reprints and permissions information is available at www.nature.com/reprints.

Publisher's note Springer Nature remains neutral with regard to jurisdictional claims in published maps and institutional affiliations.



Open Access This article is licensed under a Creative Commons Attribution 4.0 International License, which permits use, sharing, adaptation, distribution and reproduction in any medium or format, as long as you give appropriate credit to the original author(s) and the source, provide a link to the Creative Commons license, and indicate if changes were made. The images or other third party material in this article are included in the article's Creative Commons license, unless indicated otherwise in a credit line to the material. If material is not included in the article's Creative Commons license and your intended use is not permitted by statutory regulation or exceeds the permitted use, you will need to obtain permission directly from the copyright holder. To view a copy of this license, visit <http://creativecommons.org/licenses/by/4.0/>.

The Creative Commons Public Domain Dedication waiver <http://creativecommons.org/publicdomain/zero/1.0/> applies to the metadata files associated with this article.

© The Author(s) 2021

Andrew H. Baird^{1,62}✉, James R. Guest^{2,62}✉, Alasdair J. Edwards^{2,62}✉, Andrew G. Bauman³, Jessica Bouwmeester⁴, Hanaka Mera¹, David Abrego⁵, Mariana Alvarez-Noriega¹, Russel C. Babcock⁶, Miguel B. Barbosa⁷, Victor Bonito⁸, John Burt⁹, Patrick C. Cabaitan¹⁰, Ching-Fong Chang¹¹, Suchana Chavanich¹², Chaolun A. Chen¹³, Chieh-Jhen Chen¹⁴, Wei-Jen Chen¹⁴, Fung-Chen Chung¹⁵, Sean R. Connolly¹⁶, Vivian R. Cumbo¹⁷, Maria Dornelas¹⁸, Christopher Doropoulos⁶, Gal Eyal¹⁹, Lee Eyal-Shaham²⁰, Nur Fadli²¹, Joana Figueiredo²², Jean-François Flot²³, Sze-Hoon Gan²⁴, Elizabeth Gomez¹⁰, Erin M. Graham²⁵, Mila Grinblat^{1,26}, Nataly Gutiérrez-Isaza^{19,27}, Saki Harii²⁸, Peter L. Harrison²⁹, Masayuki Hatta³⁰, Nina Ann Jin Ho³¹, Gaetan Hoarau³², Mia Hoogenboom¹, Emily J. Howells³³, Akira Iguchi³⁴, Naoko Isomura³⁵, Emmeline A. Jamodiong³⁶, Suppakarn Jandang¹², Jude Keyse³⁷, Seiya Kitanobo²⁸, Narinratana Kongjandtre³⁸, Chao-Yang Kuo¹³, Charlon Ligson¹⁰, Che-Hung Lin¹³, Jeffrey Low³⁹, Yossi Loya⁴⁰, Elizaldy A. Maboloc⁴¹, Joshua S. Madin⁴², Takuma Mezaki⁴³, Choo Min⁴⁴, Masaya Morita²⁸, Aurelie Moya¹, Su-Hwei Neo⁴⁵, Matthew R. Nitschke⁴⁶, Satoshi Nojima⁴⁷, Yoko Nozawa¹³, Srisakul Piromvaragorn⁴⁸, Sakanan Plathong⁴⁹, Eneour Puill-Stephan⁵⁰, Kate Quigley⁵¹, Catalina Ramirez-Portilla²³, Gerard Ricardo⁵¹, Kazuhiko Sakai²⁸, Eugenia Sampayo^{19,27}, Tom Shlesinger⁵², Leony Sikim¹⁵, Chris Simpson⁵³, Carrie A. Sims^{19,27}, Frederic Sinniger²⁸, Davies A. Spiji¹⁵, Tracy Tabalanza¹⁰, Chung-Hong Tan⁵⁴, Tullia I. Terraneo⁵⁵, Gergely Torda¹, James True⁵⁶, Karenne Tun³⁹, Karenne Vicentuan⁵⁷, Voranop Viyakarn¹², Zarinah Waheed²⁴, Selina Ward^{19,27}, Bette Willis^{1,58}, Rachael M. Woods¹⁷, Erika S. Woolsey⁵⁹, Hiromi H. Yamamoto⁶⁰ & Syafyudin Yusuf⁶¹

¹ARC Centre of Excellence for Coral Reef Studies, James Cook University, 1 James Cook Drive, Townsville, Queensland, 4811, Australia. ²School of Natural and Environmental Sciences, Newcastle University, Newcastle upon Tyne, NE1 7RU, United Kingdom. ³Experimental Marine Ecology Laboratory, Department of Biological Sciences, National University of Singapore, 16 Science Drive 4, 117558, Singapore, Singapore. ⁴Smithsonian Conservation Biology Institute, Smithsonian Institution, Hawai'i Institute of Marine Biology, 46-007 Lilipuna Rd, Kaneohe, Hawaii, 96744, USA. ⁵National Marine Science Centre, Southern Cross University, 2 Bay Drive, Coffs Harbour, New South Wales, 2450, Australia. ⁶Oceans and Atmosphere, CSIRO, Queensland Biosciences Precinct, 306 Carmody Rd, St Lucia, Queensland, 4072, Australia. ⁷School of Biology, University of St Andrews, Sir Harold Mitchell Building, St Andrews, KY16 9TH, United Kingdom. ⁸Reef Explorer Fiji, Coral Coast Conservation Center, Votua Village, Korolevu, Nadroga, Fiji. ⁹Center for Genomics and Systems Biology, New York University Abu Dhabi, PO Box 129188, Abu Dhabi, UAE. ¹⁰Marine Science Institute, College of Science, University of the Philippines, Velasquez Street, Diliman, Quezon City, Manila, 1101, Philippines. ¹¹Aquaculture, National Taiwan Ocean University, 2 Beining Rd, Keelung, 20224, Taiwan. ¹²Reef Biology Research Group, Department of Marine Science, Faculty of Science, Chulalongkorn University, Phayathai Road, Bangkok, 10330, Thailand. ¹³Biodiversity Research Center, Academia Sinica, 128 Academia Road, Section 2, Nankang, Taipei, 11529, Taiwan. ¹⁴Center of Excellence for the Oceans, National Taiwan Ocean University, 2 Beining Rd, Keelung, 20224, Taiwan. ¹⁵Reef Guardian Sdn. Bhd., Bandar Tyng, Mile 6, North Road, Sandakan, Sabah, 90000, Malaysia. ¹⁶Smithsonian Tropical Research Institute, Apartado 0843-03092, Balboa, Republic of Panama. ¹⁷Department of Biological Sciences, Macquarie University, Macquarie Park, New South Wales, 2109, Australia. ¹⁸Centre for Biological Diversity, University of St Andrews, St Andrews, KY16 9TH, United Kingdom. ¹⁹ARC Centre of Excellence for Coral Reef Studies, The University of Queensland, St Lucia, Queensland, 4072, Australia. ²⁰The Mina & Everard Goodman Faculty of Life Sciences, Bar-Ilan University, Ramat Gan, 5290002, Israel. ²¹Faculty of Marine Science and Fisheries, Syiah Kuala University, Banda Aceh, Aceh, Indonesia. ²²Halmos College of Natural Sciences and Oceanography, Department of Marine and Environmental Science, Nova Southeastern University, 8000 N Ocean Drive, Dania Beach, Florida, 33004, USA. ²³Evolutionary Biology and Ecology, Université libre de Bruxelles, Brussels, B-1050, Belgium. ²⁴Endangered Marine Species Research Unit, Borneo Marine Research Institute, Universiti Malaysia Sabah, Jalan UMS, Kota Kinabalu, Sabah, 88400, Malaysia. ²⁵eResearch Centre, James Cook University, 1 James Cook Drive, Townsville, Queensland, 4811, Australia. ²⁶Molecular & Cell biology, College of Public Health, Medical & Vet Sciences, James Cook University, 1 James Cook Drive, Townsville, Queensland, 4811, Australia. ²⁷School of Biological Sciences, The University of Queensland, St Lucia, Queensland, 4072, Australia. ²⁸Tropical Biosphere Research Centre, University of the Ryukyus, 3422 Sesoko, Motobu, Okinawa, 905-0227, Japan. ²⁹Marine Ecology Research Centre, Southern Cross University, PO Box 157, Lismore, NSW, 2480, Australia. ³⁰Department of Biology, Ochanomizu University, 2-1-1 Otsuka, Bunkyo-ku, Tokyo, 112-8610, Japan. ³¹China-ASEAN College of Marine Sciences, Xiamen University Malaysia, Jalan Sunsuria, Bandar Sunsuria, Sepang Selangor, Darul Ehsan, 43900, Malaysia. ³²12 Rue Caumont, Saint-Pierre Reunion Island, 97410, France. ³³Centre for Sustainable Ecosystem Solutions and School of Earth, Atmospheric and Life Sciences, University of Wollongong, Northfields Avenue, Wollongong, New South Wales, 2522, Australia. ³⁴Geological Survey of Japan, National Institute of Advanced Industrial Science and Technology, Tsukuba, Ibaraki, 305-8567, Japan. ³⁵Department of Bioresources Engineering, National Institute of Technology, Okinawa College, 905 Henoko, Nago, Okinawa, 905-2192, Japan. ³⁶Graduate School of Engineering and Science, University of the Ryukyus, Nishihara, Okinawa, 902-0213, Japan. ³⁷Glenala State High School, Durack, Queensland, 4077, Australia. ³⁸Aquatic Science, Faculty of Science, Burapha University, 169 LongHaad Bangsaen Rd, Saensook, Mueang Chonburi, 20131, Thailand. ³⁹Coastal and Marine Branch, National Biodiversity Centre, National Parks Board, 1 Cluny Road, Singapore, Singapore. ⁴⁰School of Zoology, Tel-Aviv University, Ramat Aviv, 6997801, Israel. ⁴¹Department of Ocean Science, Hong Kong University of Science and Technology, Clear Water Bay, Kowloon, Hong Kong. ⁴²Hawai'i Institute of Marine Biology, University of Hawaii at Manoa, 46-007 Lilipuna Rd, Kaneohe, Hawaii, 96744, USA. ⁴³Kuroshio Biological Research Foundation, 560 Nishidomari, Otsuki Town, Hata Kochi, 788-0333, Japan. ⁴⁴Reef Ecology Lab, Department of Biological Sciences, National University of Singapore, 16 Science Drive 4, 117558, Singapore, Singapore. ⁴⁵Department of Biological Sciences, National University of Singapore, 16 Science Drive 4, 117558, Singapore, Singapore. ⁴⁶School of Biological Sciences, Victoria University of Wellington, Wellington, 2820, New Zealand. ⁴⁷1952-3 Tomioka, Reihoku-machi, Kumamoto, 863-2507, Japan. ⁴⁸286/53-54 Suriwong Rd, Si Phraya, Bangrak, Bangkok, 10500, Thailand. ⁴⁹Department of Biology, Faculty of Science, Prince of Songkla University, 15 Karnjanavanich Rd, Hat Yai, 90110, Thailand. ⁵⁰Sustainable Research Vessel, Landéda, 29870, France. ⁵¹Australian Institute of Marine Science, PMB 3, Townsville, Queensland, 4810, Australia. ⁵²Institute for Global Ecology, Florida Institute of Technology, 150 West University Boulevard, Melbourne, Florida, 32901-6988, USA. ⁵³25 Mettam Street, Trigg, Western Australia, 6029, Australia. ⁵⁴Faculty of Science and Marine Environment, Universiti Malaysia Terengganu, Kuala Nerus, Terengganu, 21030, Malaysia. ⁵⁵Red Sea Research Center, Division of Biological and Environmental Science and Engineering, King Abdullah University of Science and Technology, Thuwal, 23955-6900, Saudi Arabia. ⁵⁶Faculty of Agricultural Technology, King Mongkut's Institute of Technology Ladkrabang, Chalongkrung Rd, Ladkrabang, Bangkok, 10520, Thailand. ⁵⁷Tropical Marine Science Institute, National University of Singapore, 18 Kent Ridge Road, 119227, Singapore, Singapore. ⁵⁸College of Science and Engineering, James Cook University, 1 James Cook Drive, Townsville, Queensland, 4811, Australia. ⁵⁹The Hydrous, PO Box 309, Sausalito, CA, 94965, USA. ⁶⁰Okinawa Churashima Research Center, Okinawa Churashima Foundation, 888 Ishikawa, Motobu, Okinawa, 905-0206, Japan. ⁶¹Faculty of Marine Science and Fisheries, Hasanuddin University, Makassar, Indonesia. ⁶²These authors contributed equally: Andrew H. Baird, James R. Guest, Alasdair J. Edwards. ✉e-mail: andrew.baird@jcu.edu.au; james.guest1@newcastle.ac.uk; alasdair.edwards@newcastle.ac.uk